

---

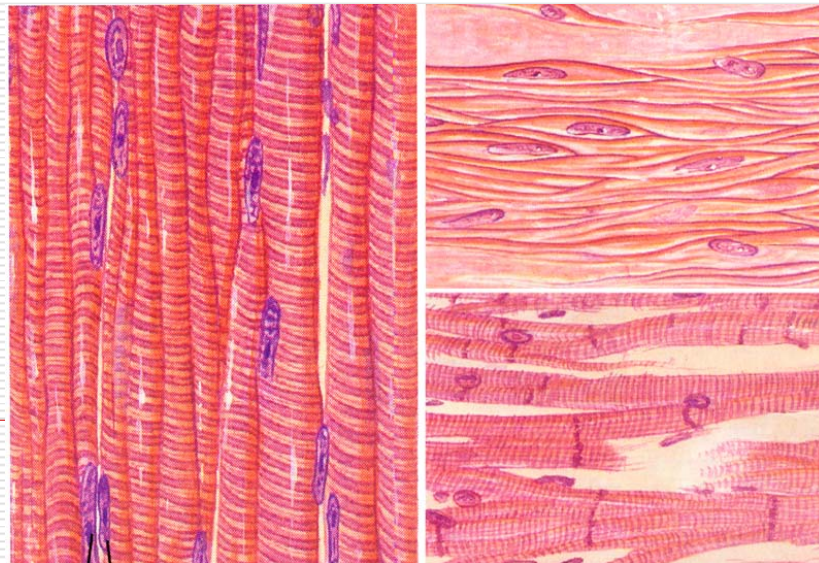
# **Chapter 7 Muscle Tissue**

**Liu Jiamei**

# Organization:

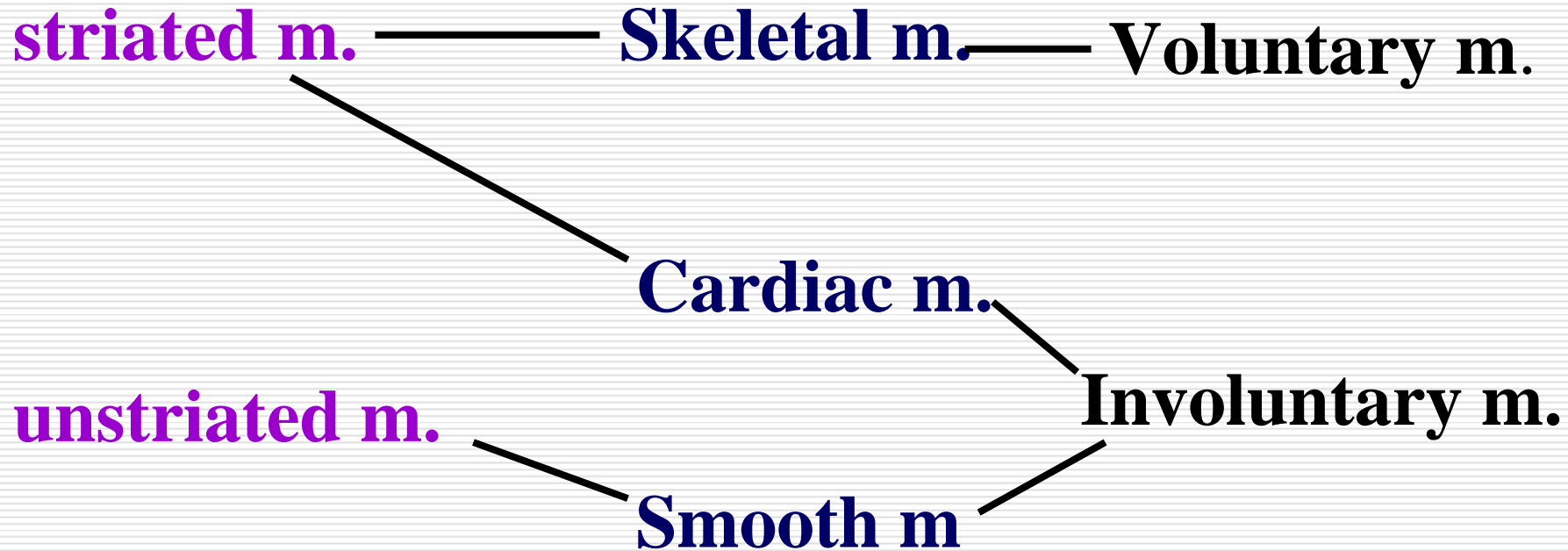
---

- ❑ Muscle cell-----muscle fiber
- ❑ Membrane of muscle C.---sarcolemma
- ❑ Cytoplasm of muscle C.----sarcoplasm
- ❑ Smooth endoplasmic reticulum--  
sarcoplasmic reticulum



# Classification:

---

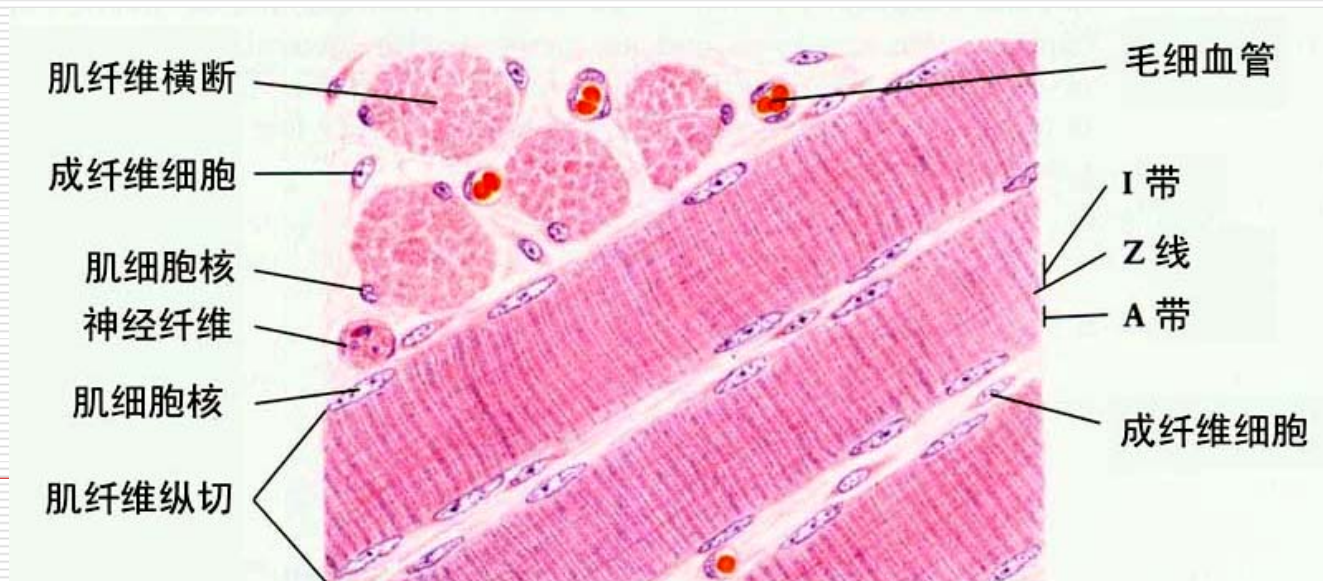


# I .Skeletal muscle

## 1.General structure of skeletal muscle

**LM:** long cylinder shape cell, multinucleated cell,

**oval nuclei located under the sarcolemma, pale staining**

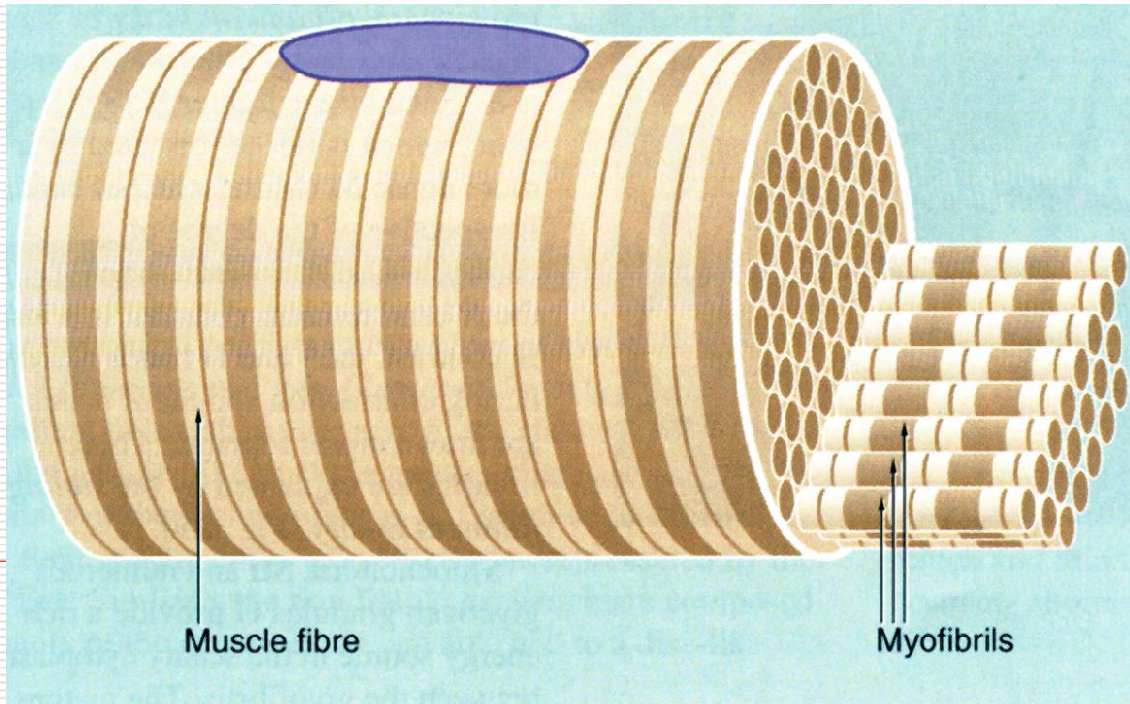


# Myofibril :

---

light bands (I band): Z line

dark bands (A band)

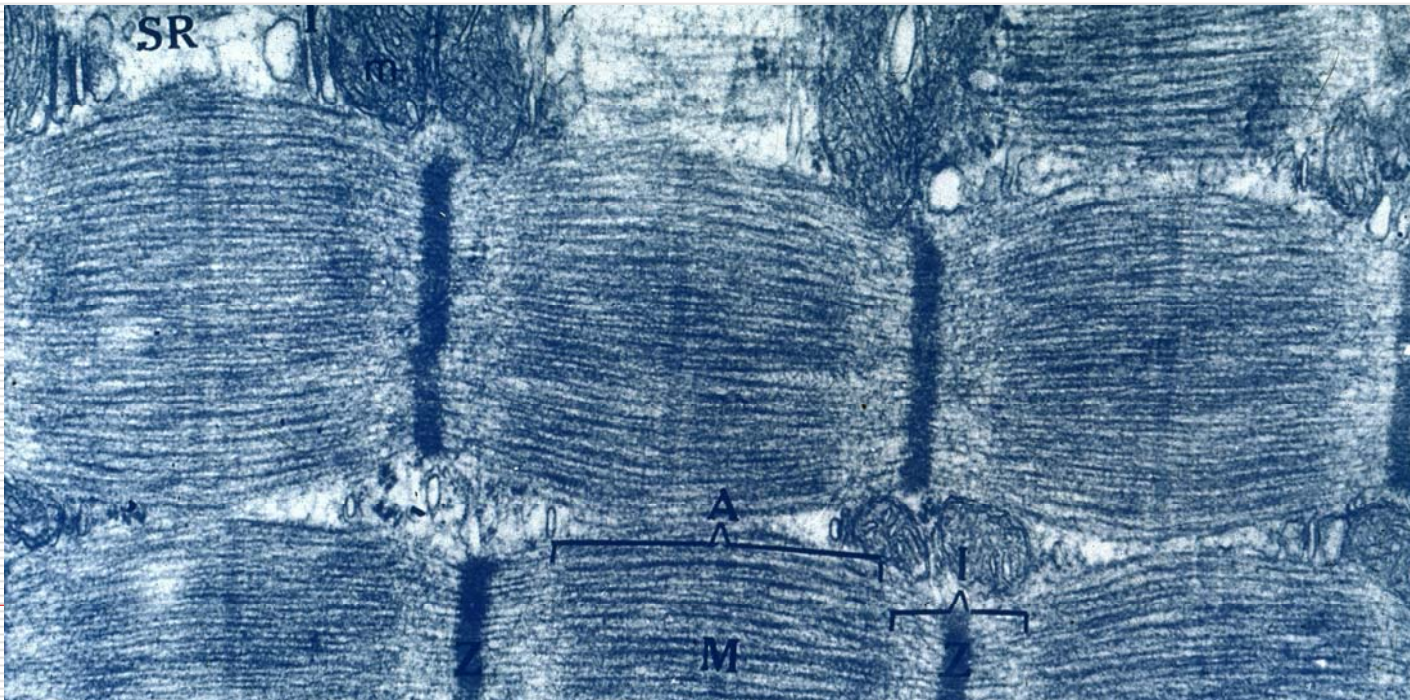


## 2. Ultrastructure of skeletal muscle

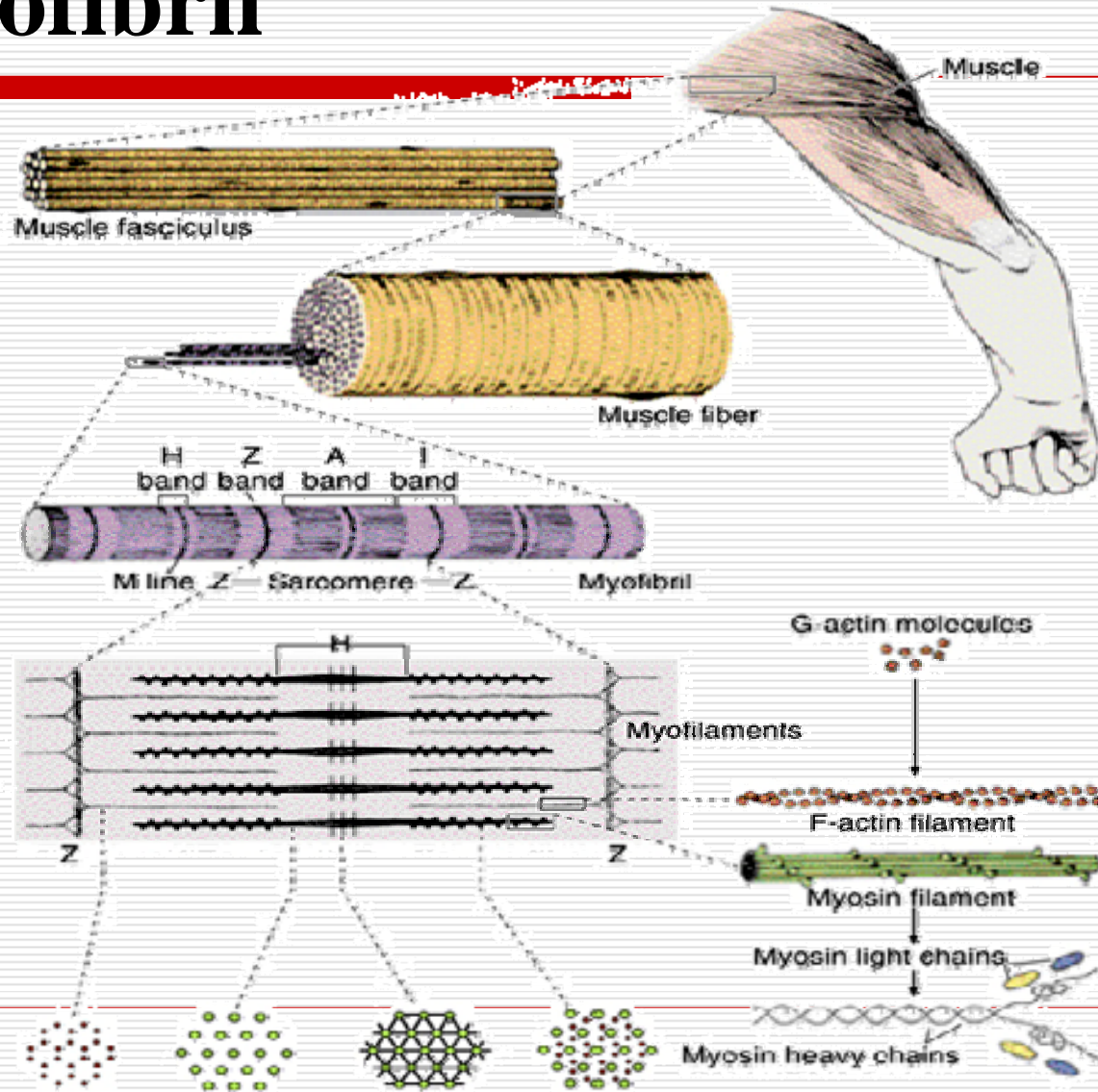
---

### 2.1 Myofibril

- long , parallel , cylindrical filamentous bundles
- consisting of two types of myofilament (thin & thick)



# 2.1 Myofibril

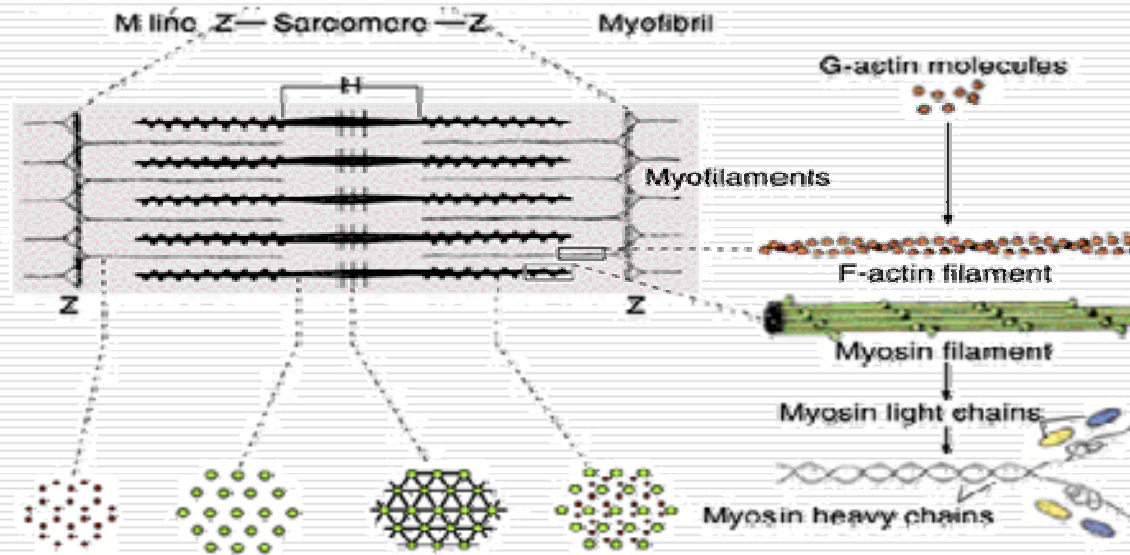


# Sarcomere

---

the segment between two adjacent Z line

1/2 light band + dark band + 1/2 light band

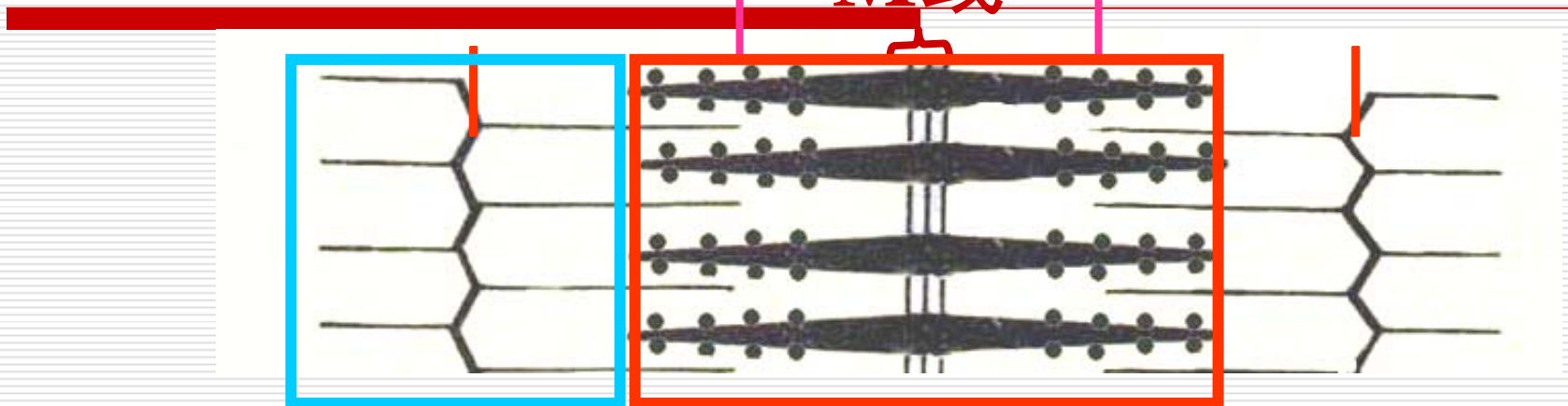




# sarcomere

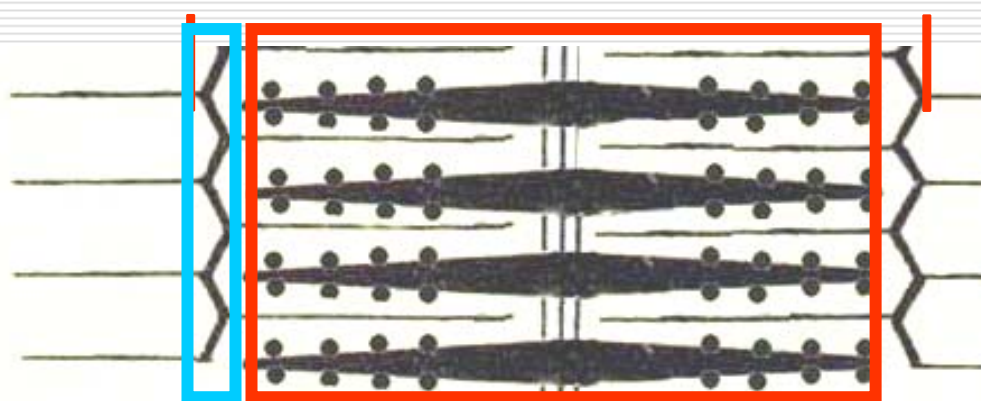
Relaxation:

Z线 H带 M线 Z线

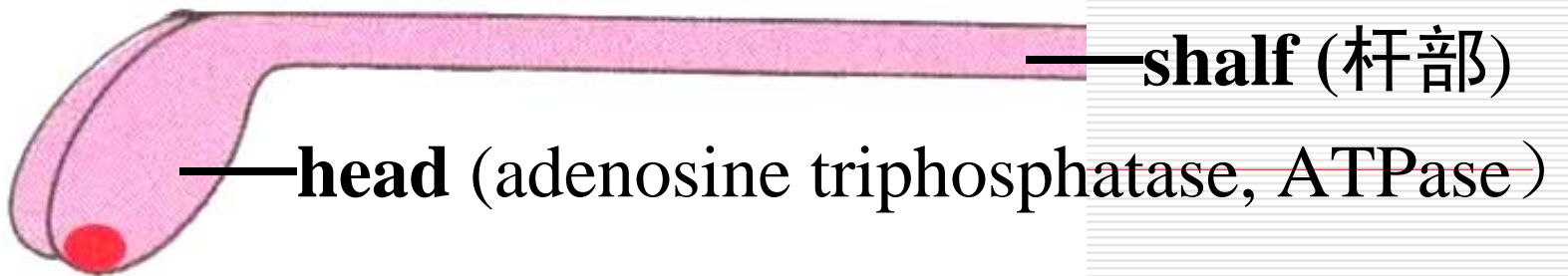
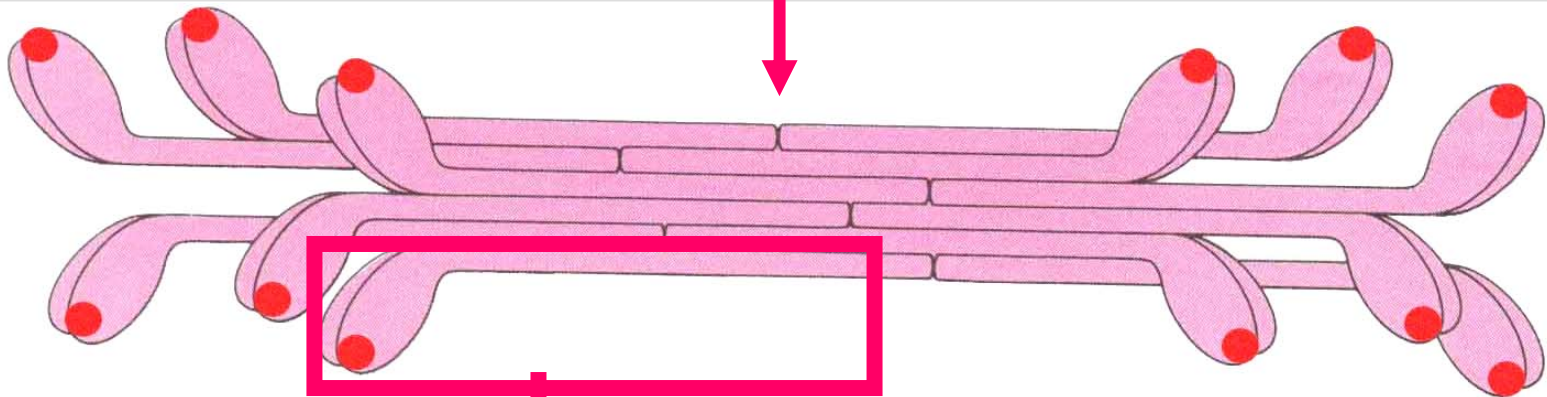


Z线 Z线

Contraction:

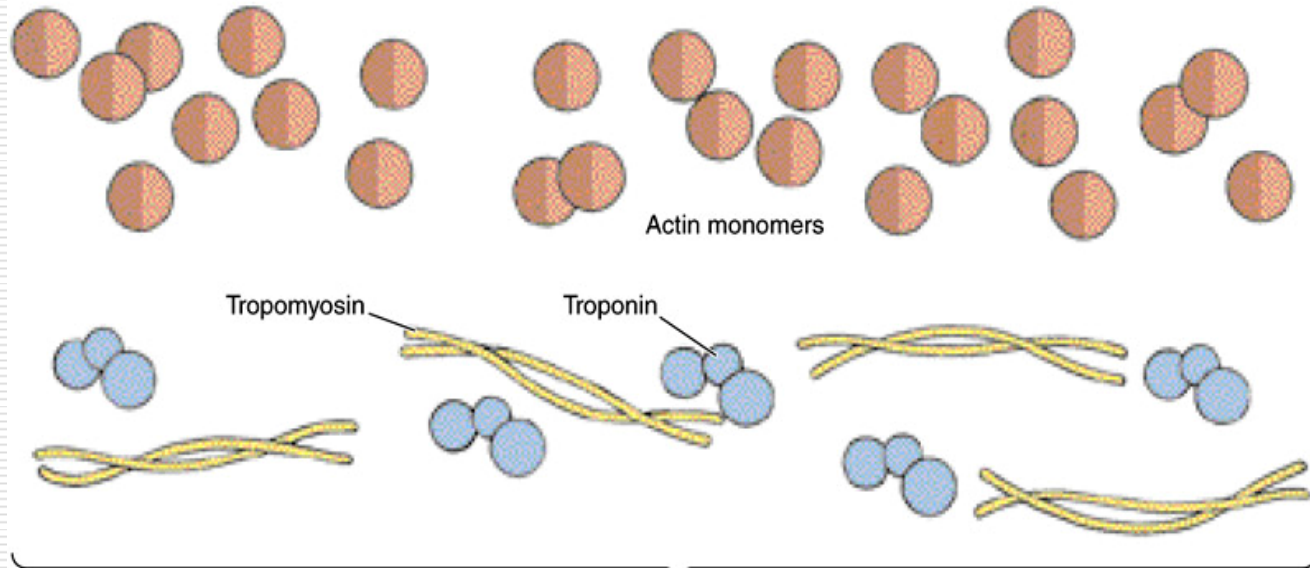


# (1) Thick myofilament (myosin)

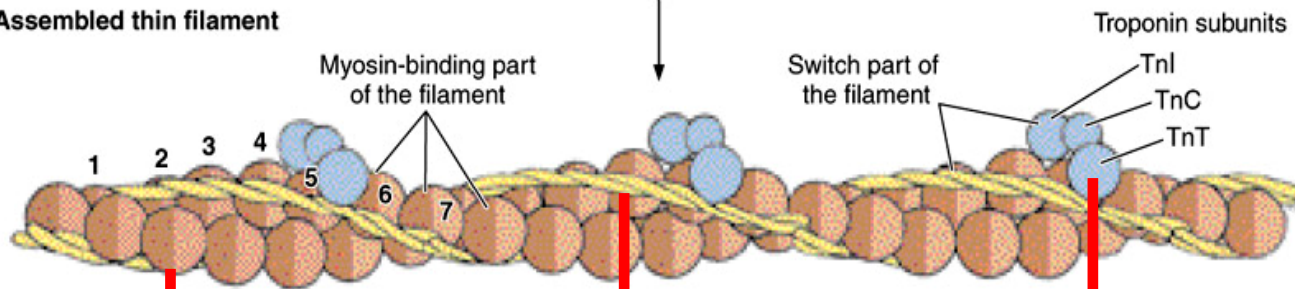


## (2) Thin myofilament

Disassembled components of the thin filament



Assembled thin filament

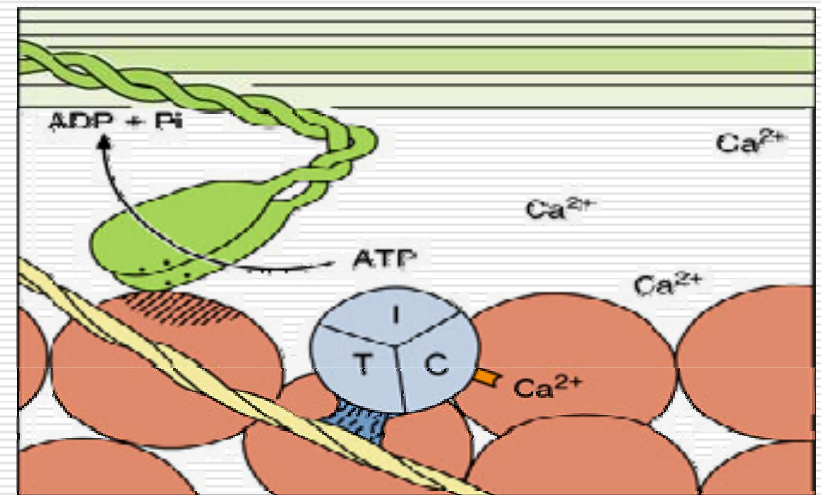
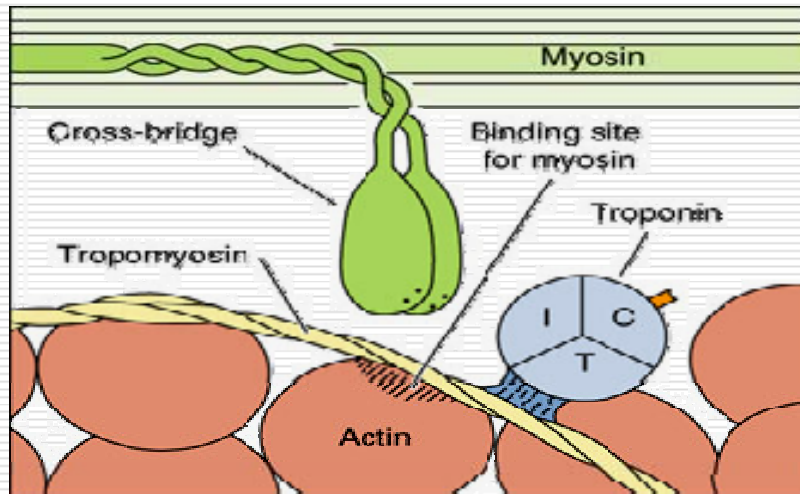


肌动蛋白

原肌球蛋白

肌钙蛋白

# Contractile principle of skeletal muscle fiber

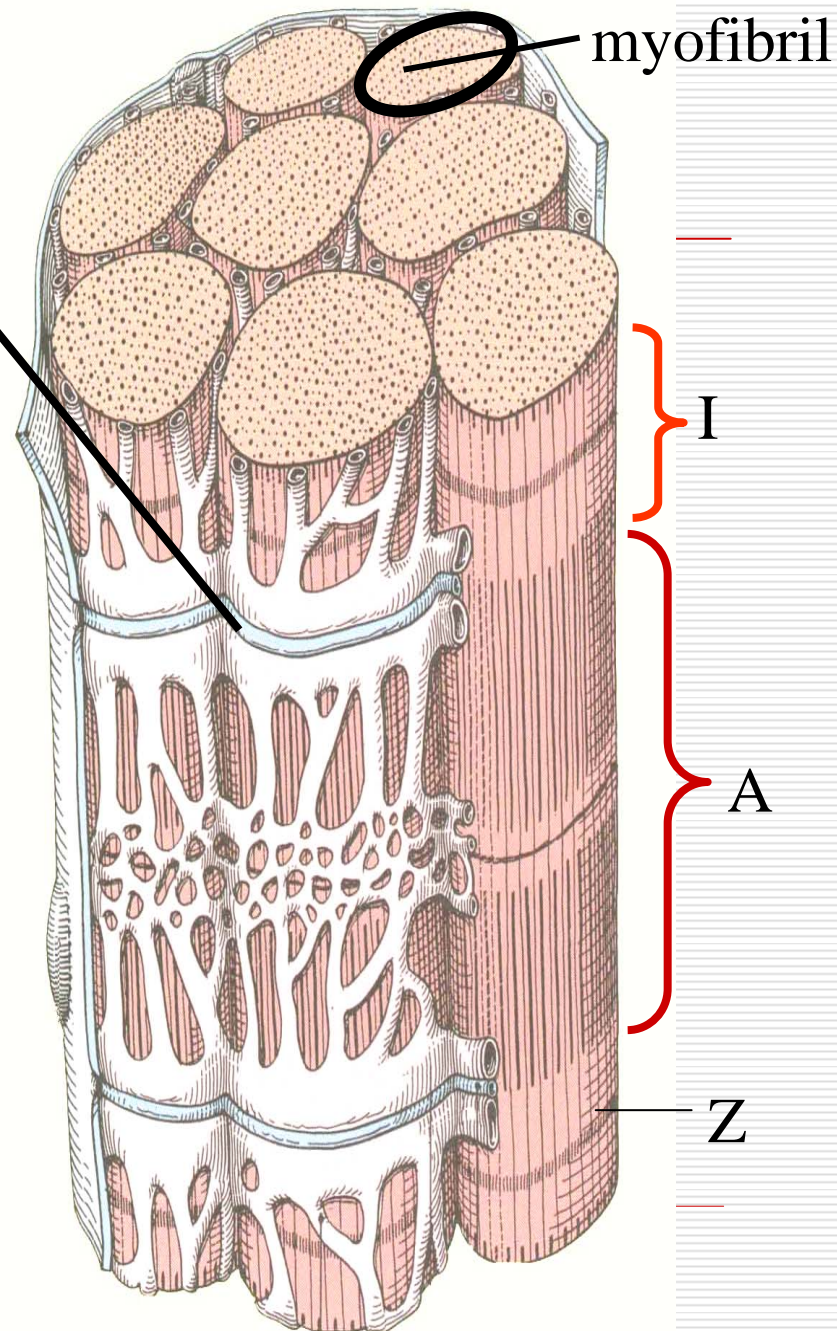


Total Video Converter  
<http://effectmatrix.com>



## 2.2 Transverse tubule

- \* invaginations of the surface sarcolemma
- \* lying as rings around each myofibril
- \* located at A-I junction
- \* providing for the rapid spread throughout the entire muscle fiber of surface membrane excitation.



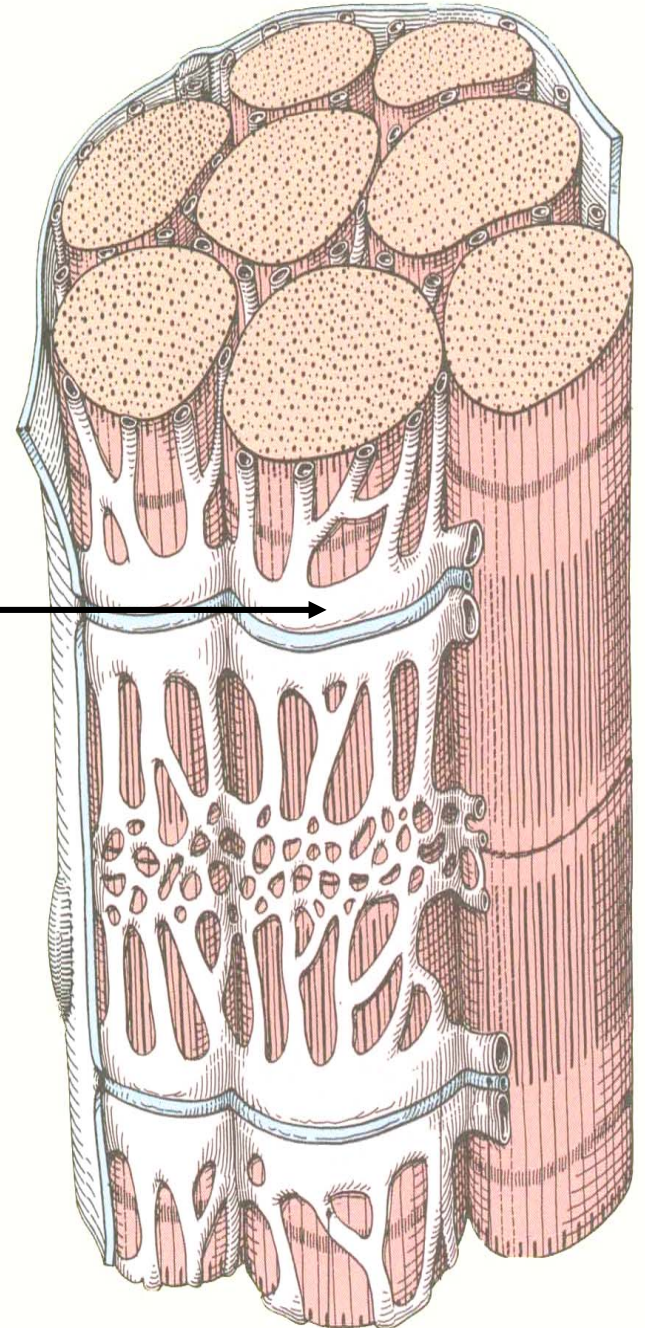
## 2.3 sarcoplasmic reticulum

---

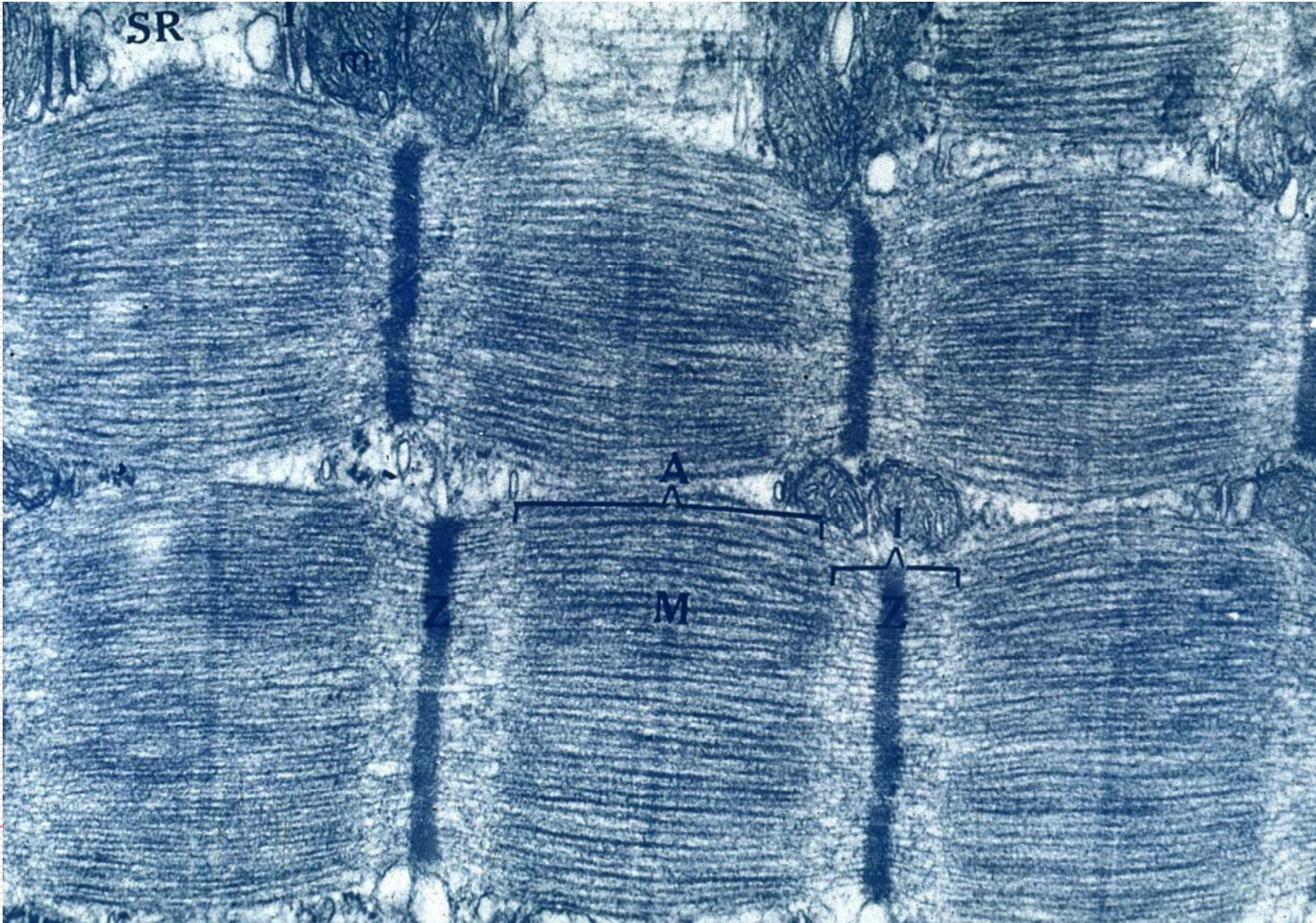
- longitudinal tubule
- terminal cisternae

### Triad

the T tubule is sandwiched between two terminal cisternae.



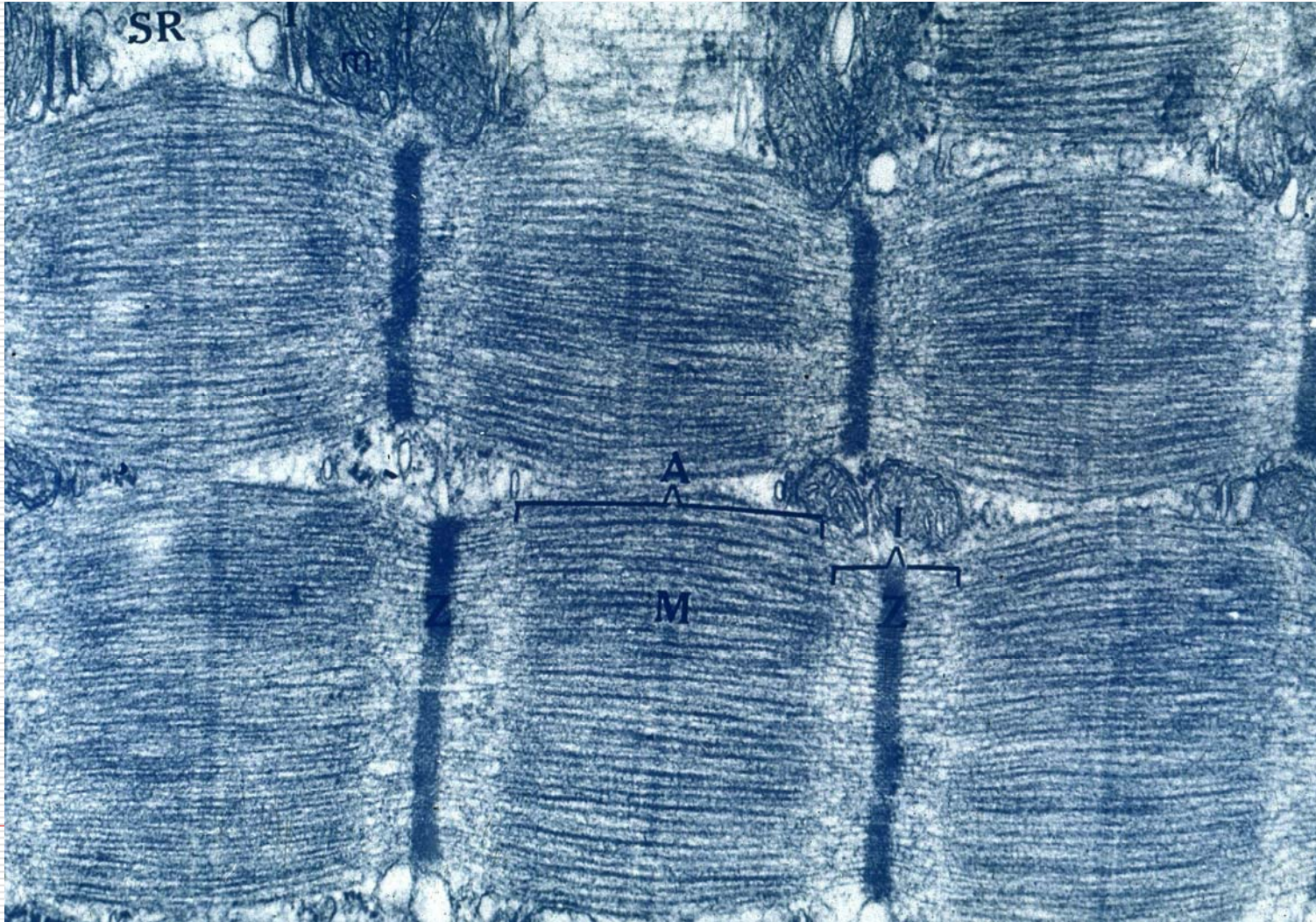
# Triad





## 2.4 Mitochondria

---

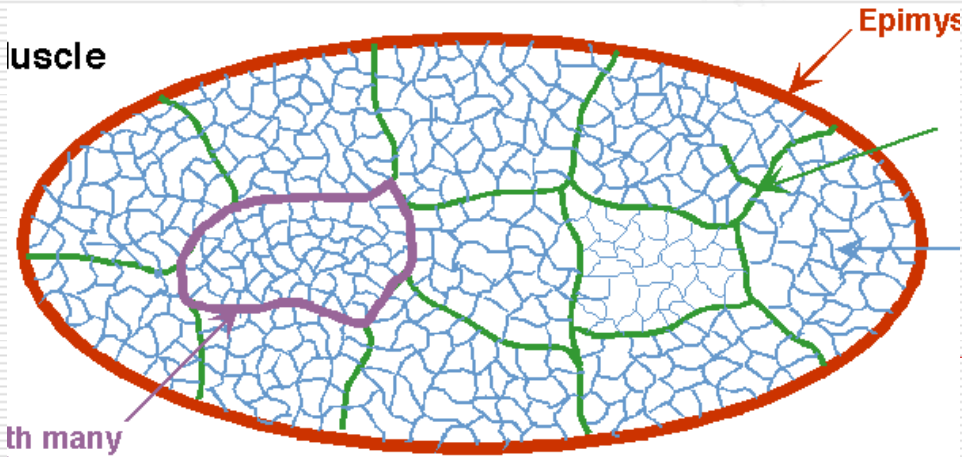
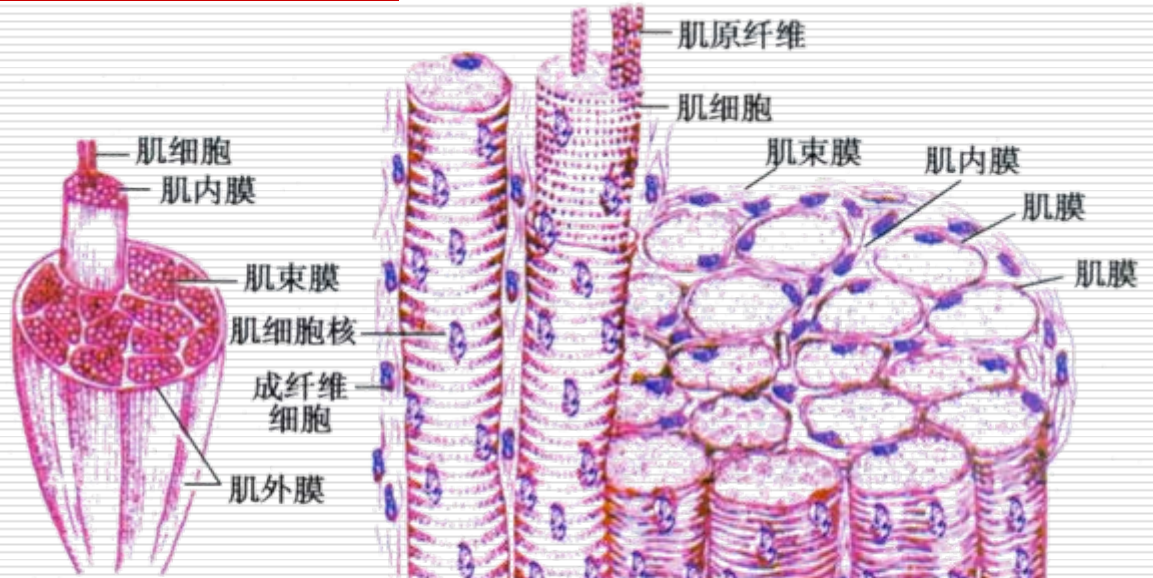


# muscle

Epimysium

Perimysium

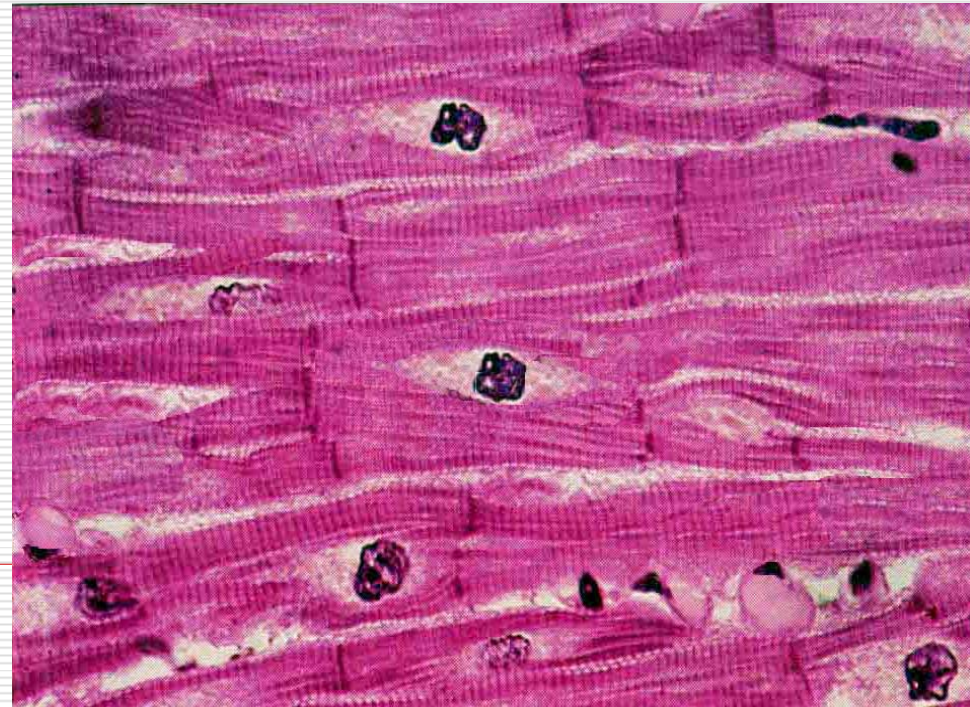
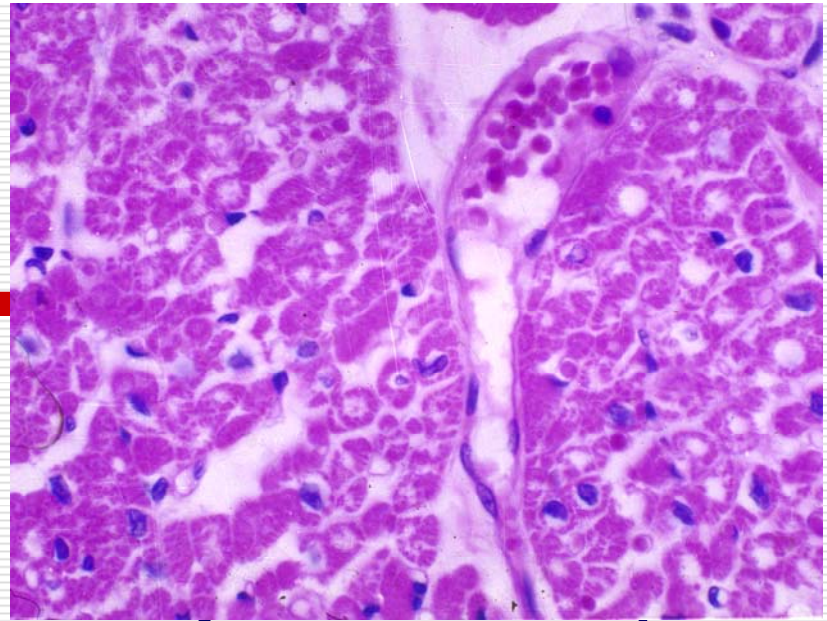
Endomysium



## II. Cardiac muscle

---

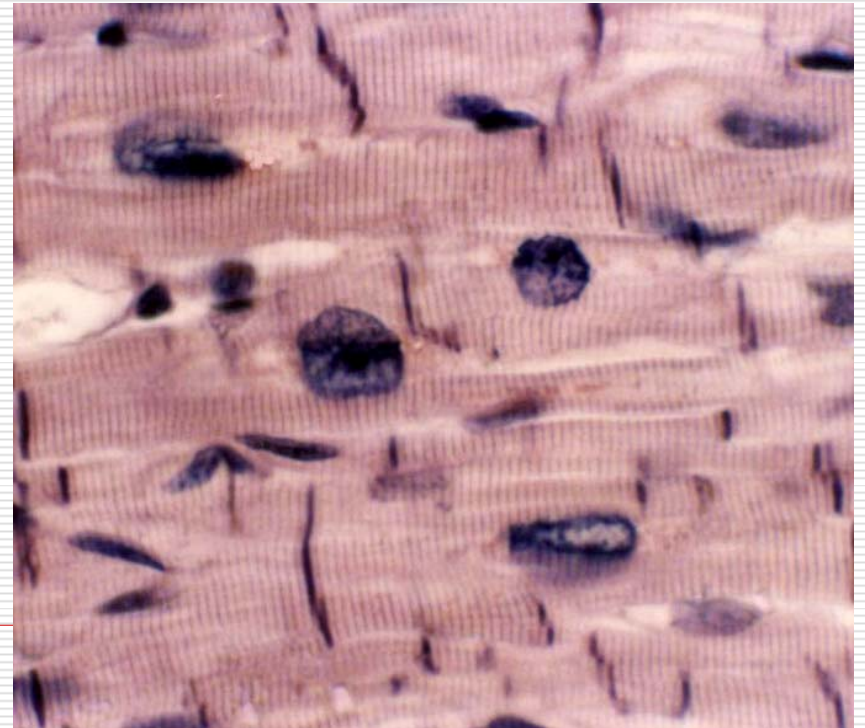
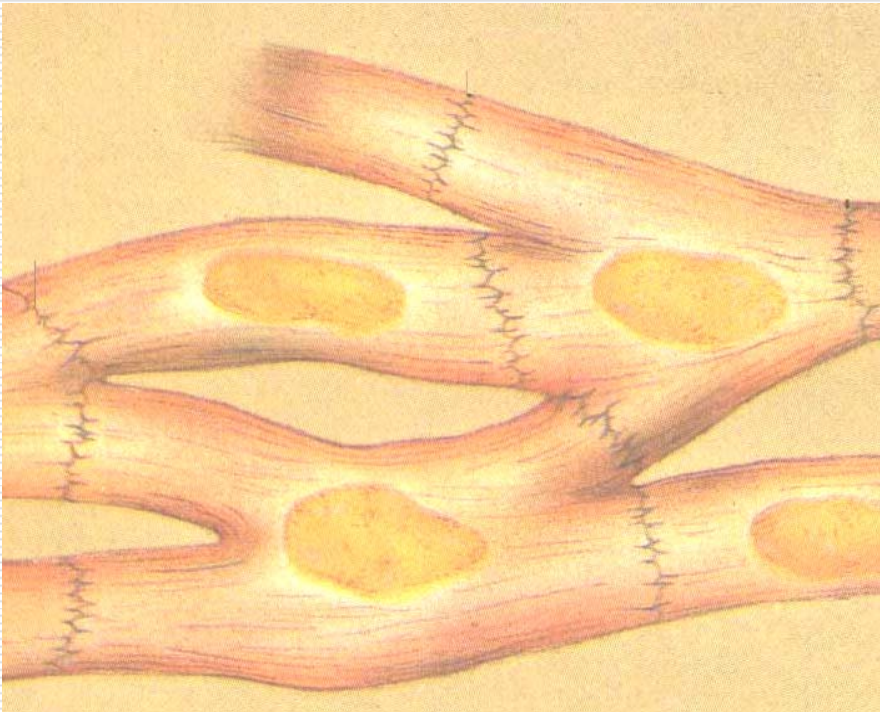
- short cylindrical shape
- to be branched
- the central location of the nucleus, one or two nucleus per fiber
- cross striation
- myofibril
- intercalated disks



# Intercalated disk:

---

**Dark staining transverse lines between adjacent cardiac muscle cells**



# EM:

---

\*containing myofilaments, but myofibril is not well defined

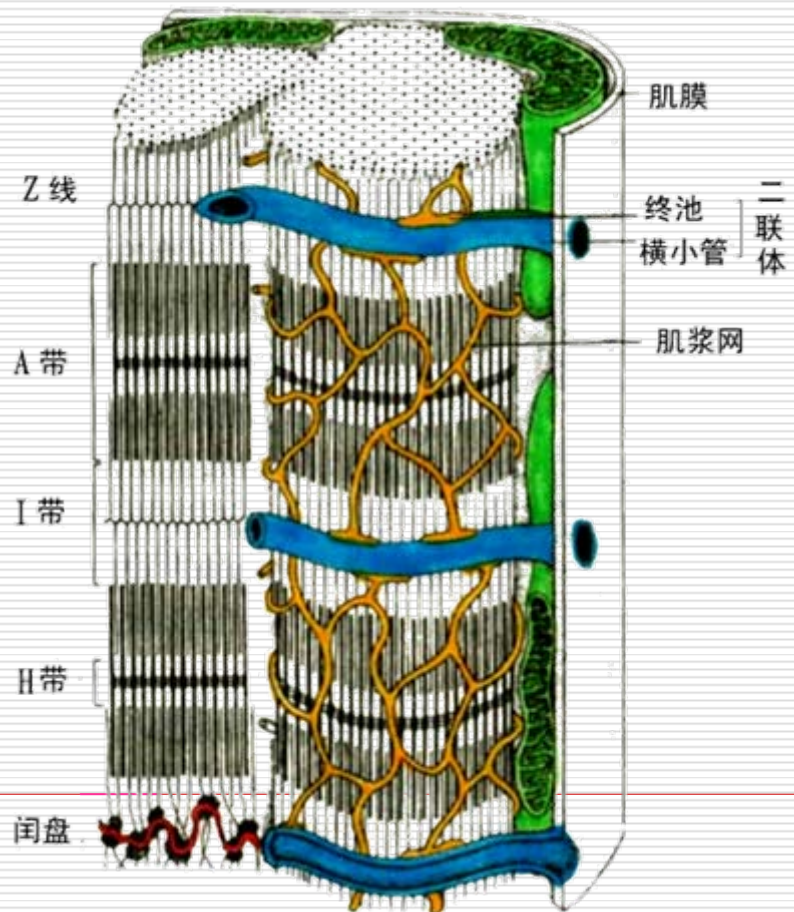
\*sarcoplasmic reticulum is less developed

\*T tubeles are much wider located in the Z lines.

\*Diad

---

\* intercalated disk



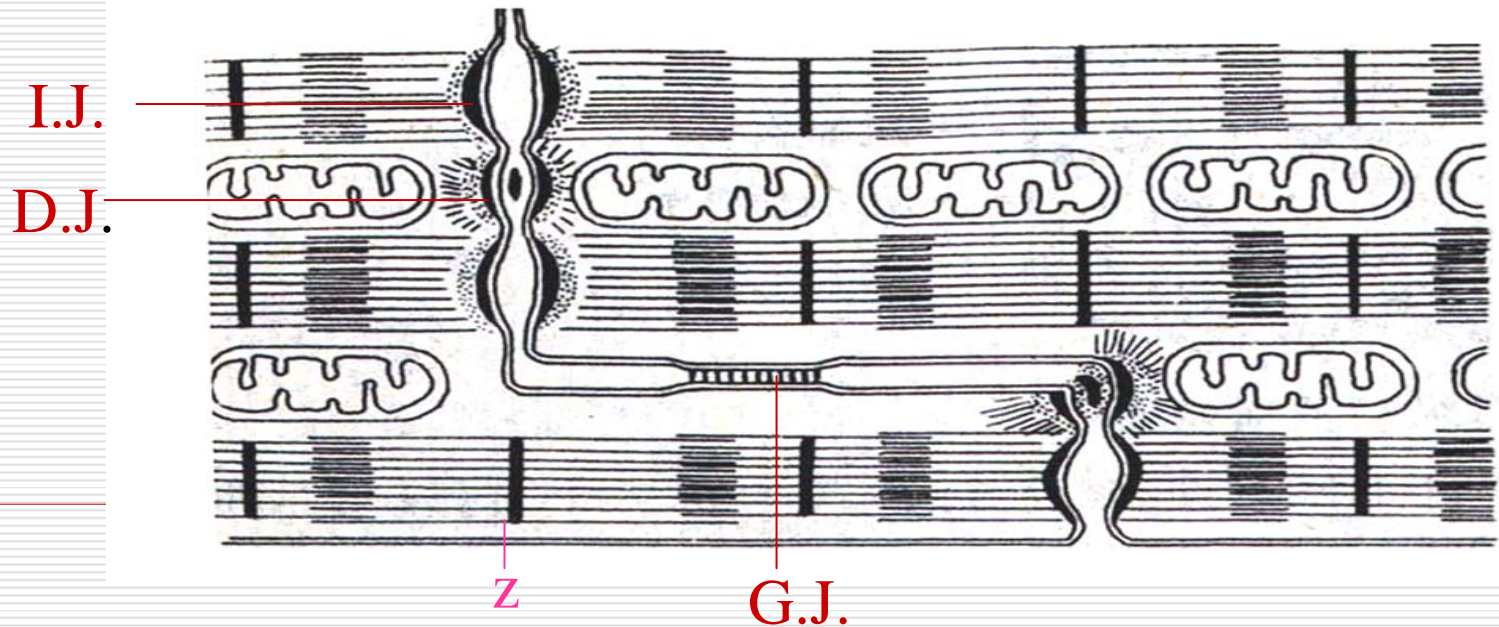
# Intercalated disc

---

Specialized cell junctions located at Z lines

*transverse region: intermediate/desmosomes j.*

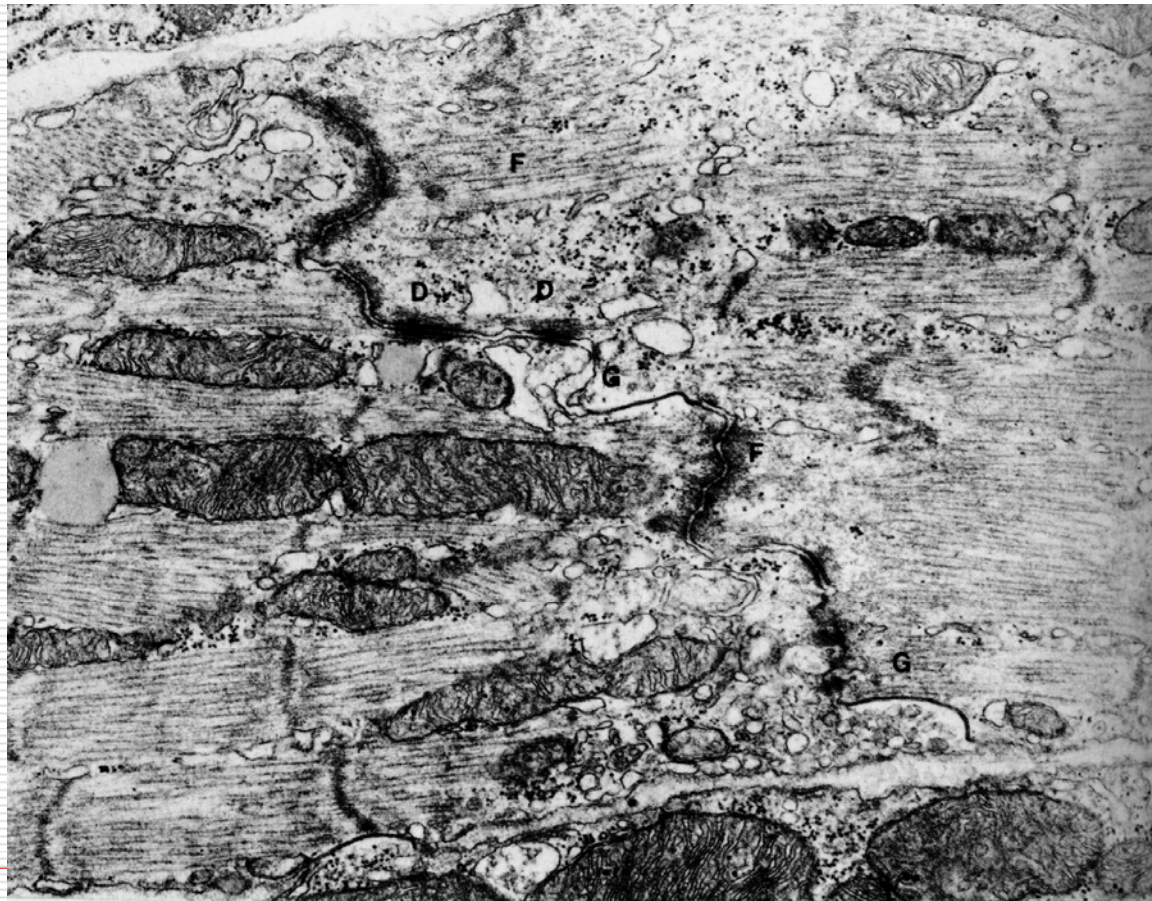
*longitudinal region: gap junction*



# Intercalated disk

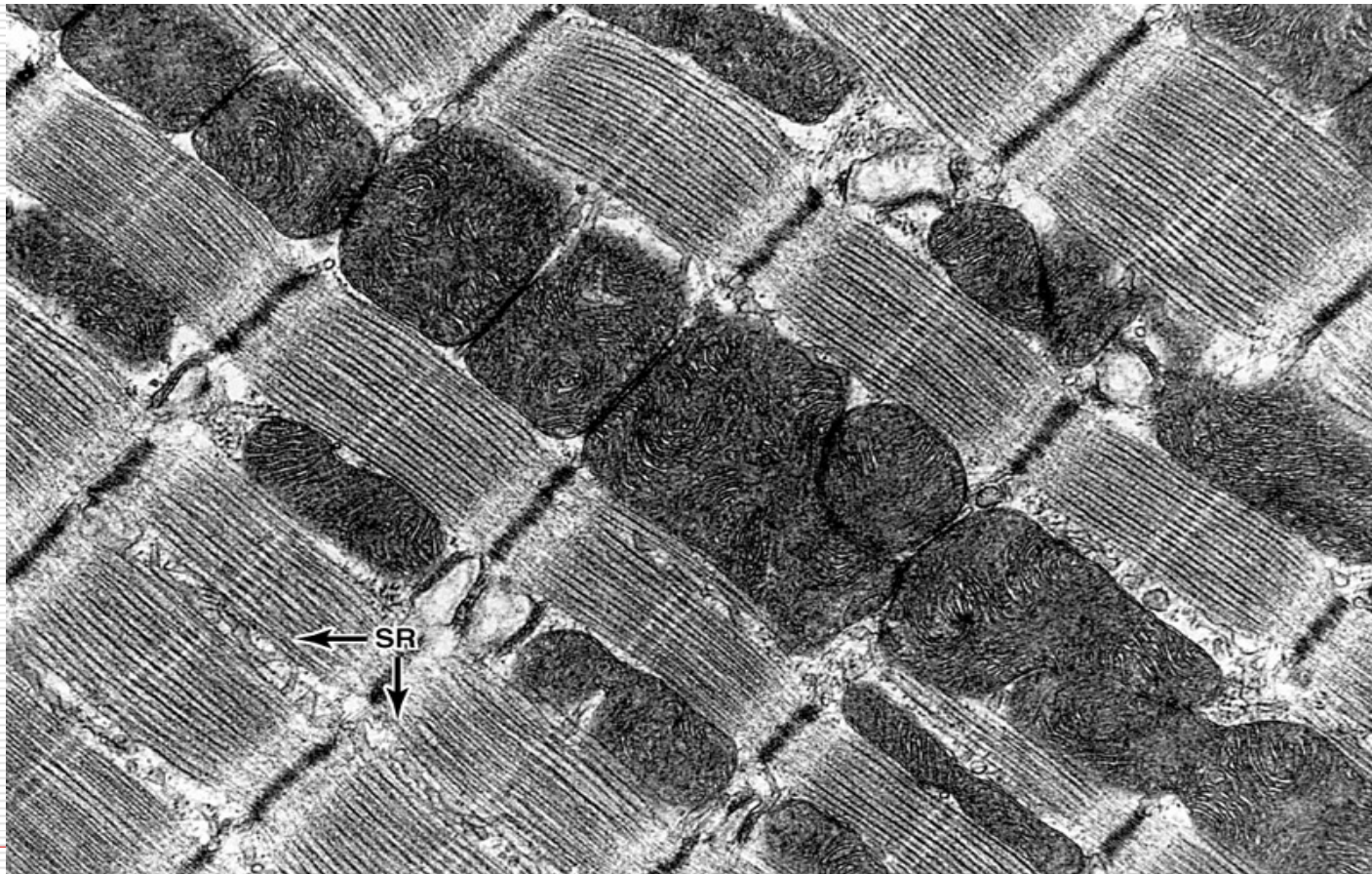
---

**EM:**



# Very large and rich mitochondria

---





# **Different points:**

---

**1 Myofibril bundles**

**2 T tubule (Z line level)**

**3 Sarcoplasmic reticulum(diad)**

**4 Intercalated disk**

**5 Very large and rich mitochondria**

---

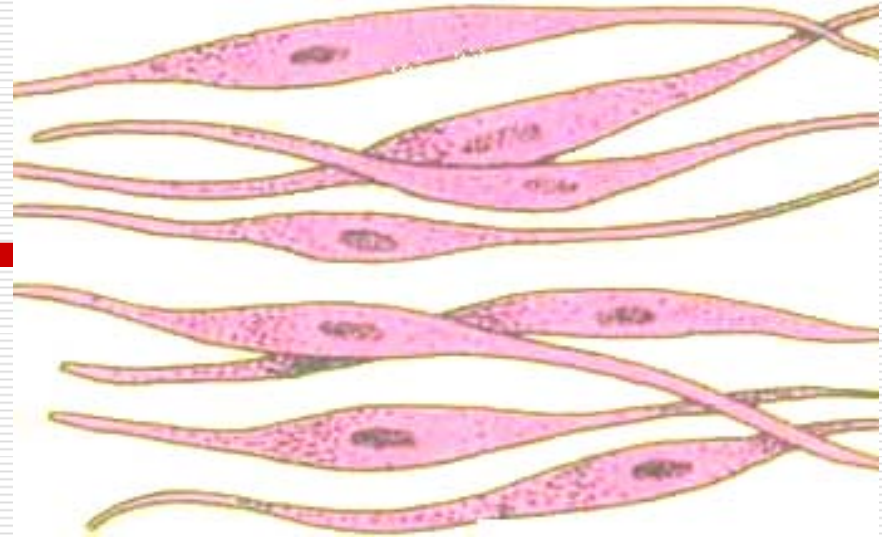
# **III. Smooth Muscle**

---

## **1. General structure**

**LM: Longer spindle shape cell, a single nucleus located in the center of cell (dark staining ), eosinophilic and nonstriated cytoplasm**

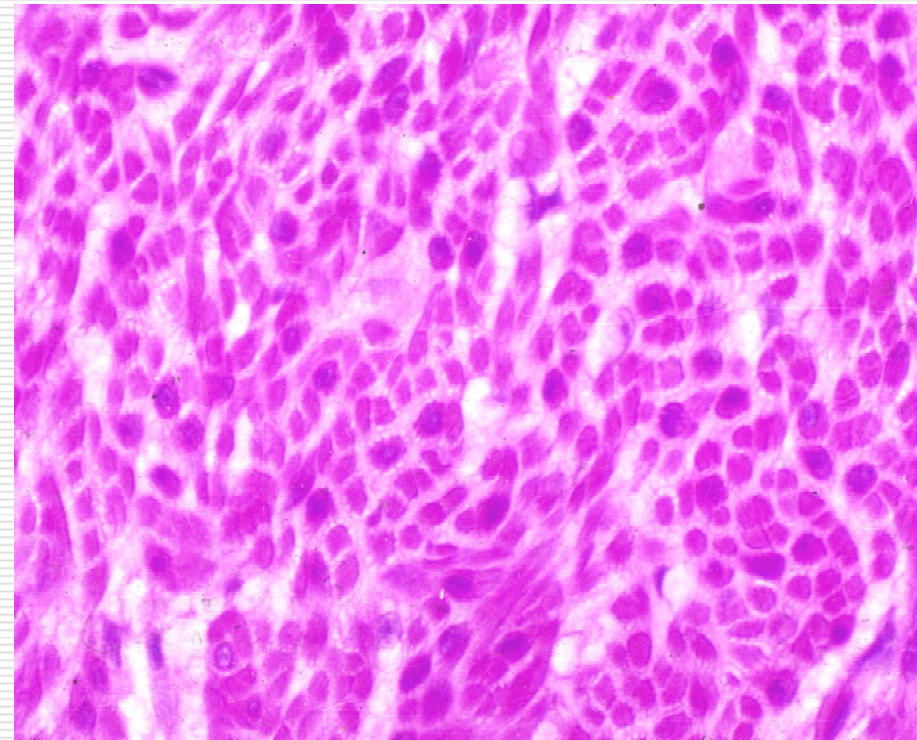
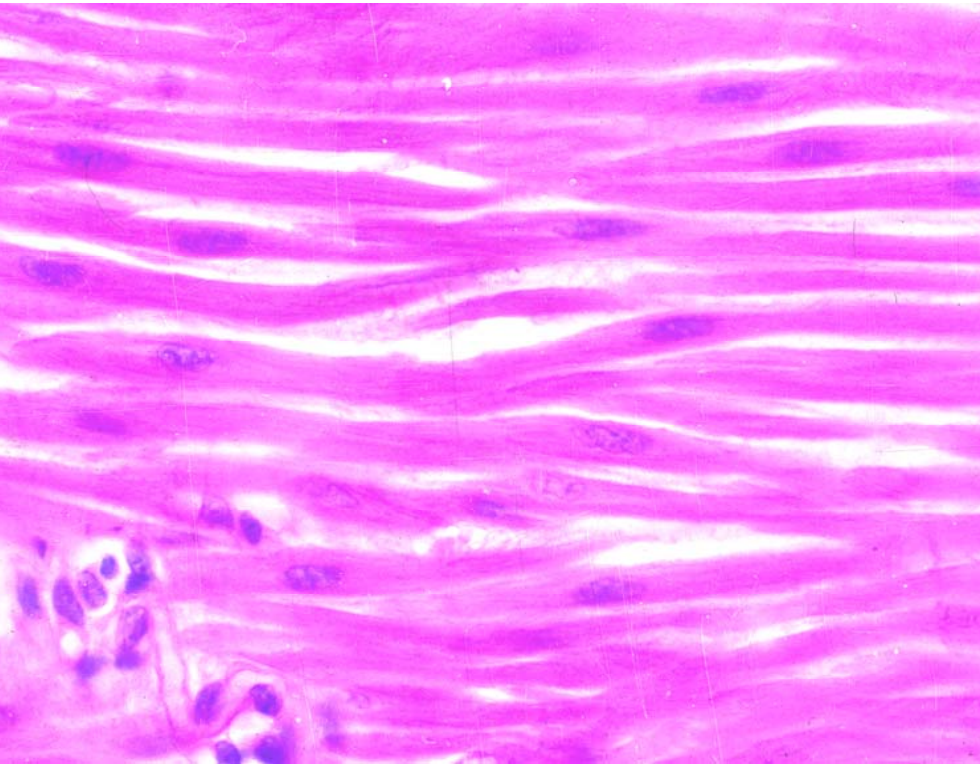
---



# III. Smooth Muscle

---

LM



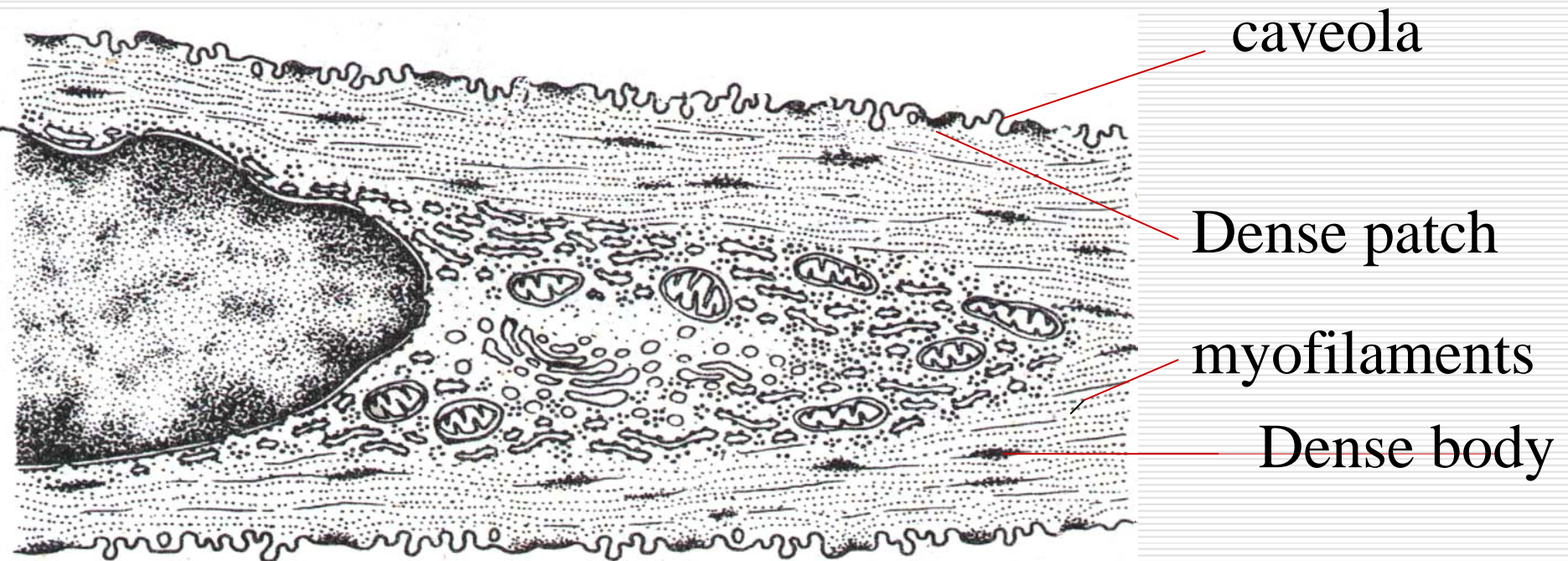
## 2. Ultrastructure of smooth muscle

---

① dense area: (equal to Z membrane)

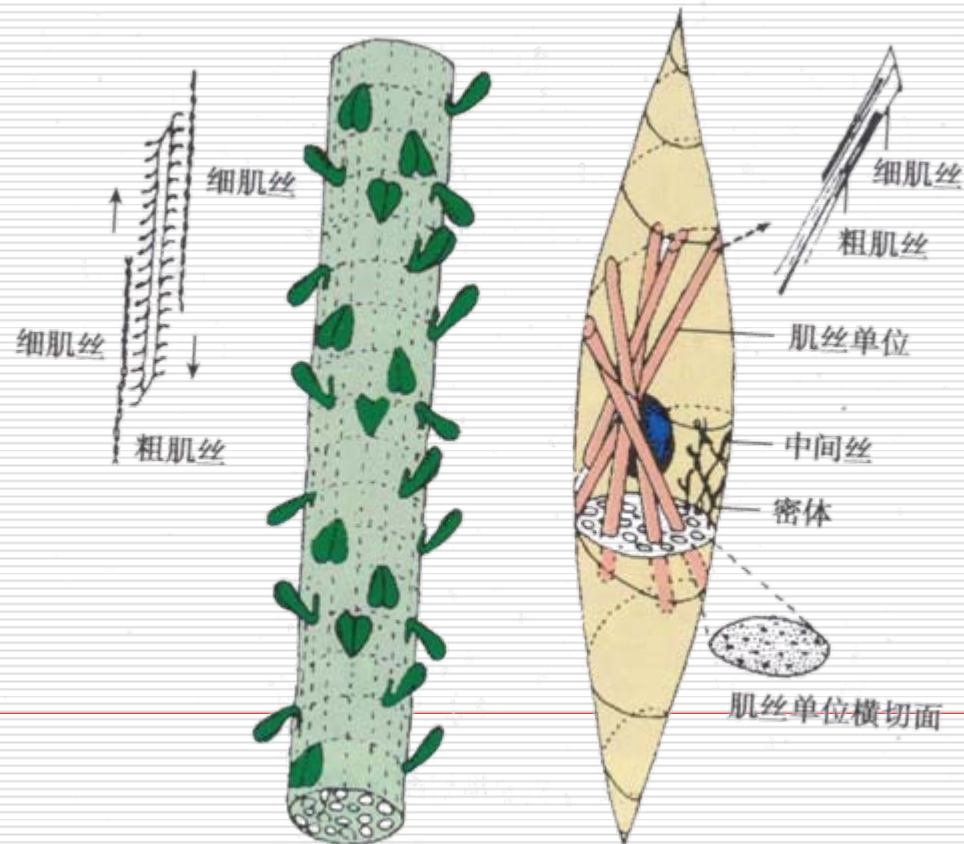
② dense body:

③ caveola:



# ④ myofilament:

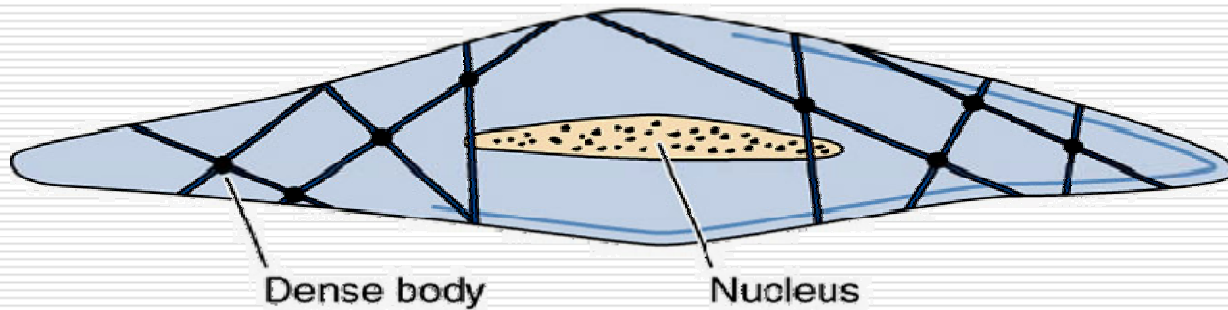
thick filament 、 thin filament



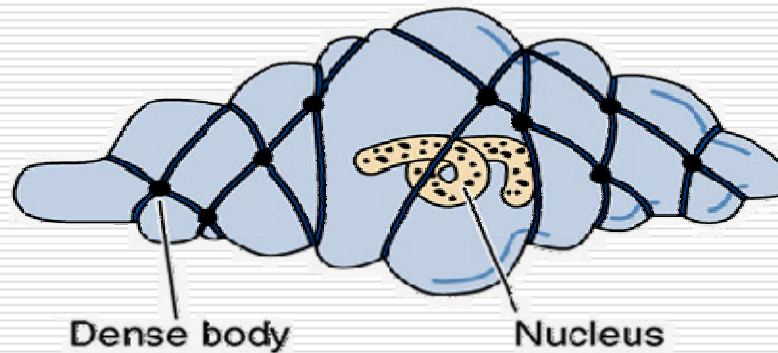
# Contraction of smooth muscle fiber (model)

---

Relaxed smooth muscle cell



Contracted smooth muscle cell

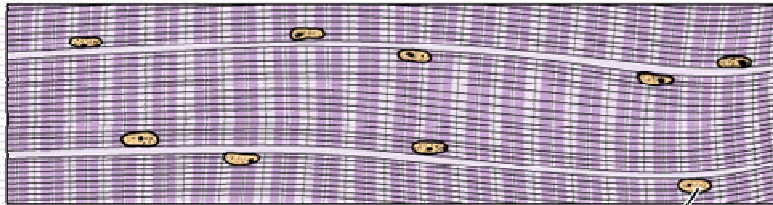


# Compare with three kinds of muscle fibers under light microscope(model)

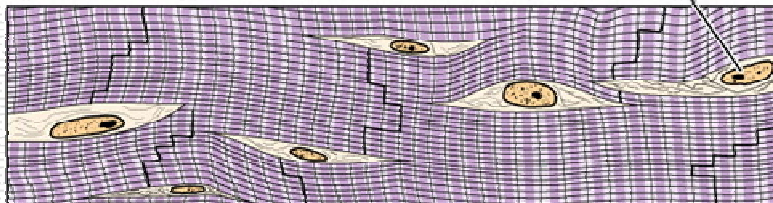
---

## Muscle types

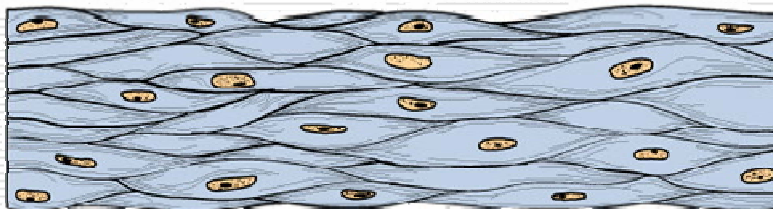
### Skeletal muscle



### Cardiac muscle

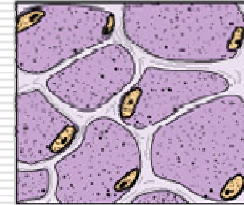


### Smooth muscle

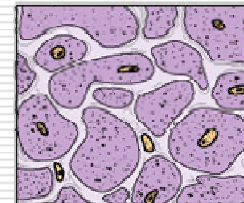


## Activity

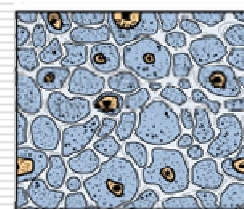
### Cross sections



Strong, quick  
discontinuous  
voluntary  
contraction



Strong, quick  
continuous  
involuntary  
contraction



Weak, slow  
involuntary  
contraction

---